

# strong wood floors.

## care & maintenance manual.

BERRY  ALLOC

Depending on how much strain your Senses wooden floor is placed under, it is subject to natural wear and tear. Marks of use on the surface can also occur on hardwood and high-quality surface treatments over the long term. This is why we recommend preventative measures and regular care.

The surface of your strong wood floor is treated at the factory, so that dirt and dust do not penetrate the wood.

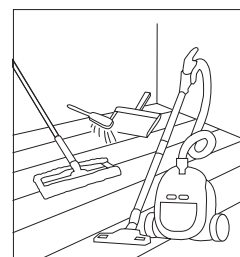
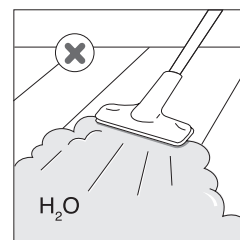
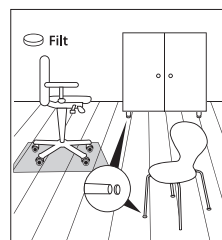
Good precautions bring easy maintenance: place door mats of good quality, both outside and inside entrance doors, to catch gravel/sand and moisture, and place felt pads under furniture to prevent scratches.

To effectively maintain strong wood floors, proceed by removing dust by using a vacuum cleaner fitted with a parquet brush or a dust mop.

**Never wash your flooring with copious amounts of water. Wring out your mop, rags, or sponge brushes several times. Never use a steam cleaner.**

### Practical advice

Recommended maintenance: use a soft and damp microfiber mop to remove excessive cleaning product from the surface. Never use oil or wax to maintain lacquered wooden floor.



### Strong wood floors maintenance.

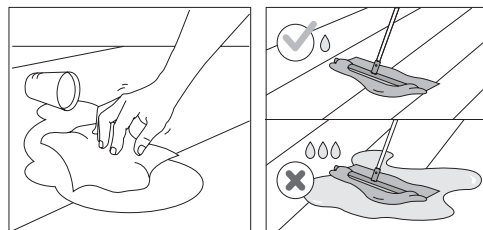
Frequency	Suitable products	Use
Daily maintenance	Dry cleaning with a broom	Remove dust using a microfibre mop or vacuum cleaner In the event of a stain, use a clean microfiber cloth / mop
Routine maintenance	A cleaner for parquet / wooden flooring surfaces : degreases and cleans the surface.	Use a microfiber cloth/mop Read the instructions of use
Occasional maintenance	A refresher for extra matt parquet / wooden flooring surfaces: <ul style="list-style-type: none"> <li>— forms a protective film that provides additional protection and a lasting embellishment of varnished strong wood floors with satin or mat appearances</li> <li>— provides additional protection to the bevels</li> <li>— to be performed during the first maintenance and repeated once or twice a year as needed</li> </ul>	Read the instructions of use
Deep cleaning	A degreaser for parquet / wooden flooring surfaces: <ul style="list-style-type: none"> <li>— enables intensive cleaning</li> <li>— eliminates stains that are resistant to regular products (black marks, accumulations of grease).</li> </ul>	Read the instructions of use



# strong wood floors. care & maintenance manual.

## For cleaning specific stains

- Fruit, juice, soft drinks, coffee, tea, milk and urine: Damp, well-wrung microfibre cloth or sponge. If necessary, a little cleaning agent suitable for parquet/wooden floors is added to lukewarm water.
- Blood: Cold water.
- Chocolate, rubber, shoe polish, wax, grease, oil: White spirit.
- Crayons, markers, lipstick, tar: Denatured alcohol and water (50/50).
- Stearine, chewing gum: use cooling spray or wait until it hardens. Then carefully scrape off using a plastic scraper.



## Strong wood floors repair.

Frequency	Suitable products	Use
Irreversible damage (scratches)	A refresher for extra mat parquet / wooden flooring surfaces	Read the instructions of use
Irreversible deep damage (holes, cracks...)	A repair kit / wood filler	Read the instructions of use