

Original

Class 34: The **Original** collection is designed for :

- Heavy domestic use : bedrooms, living rooms, kitchens, entrances
- Intensive commercial use : e.g. hotels, restaurants, offices, shops, hairdressers, cars showrooms

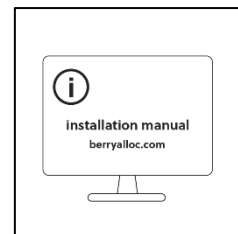


Original can be installed in bathrooms without drain and slope in the subfloor.

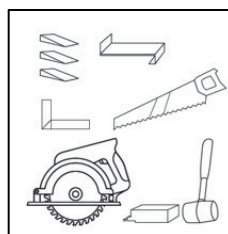
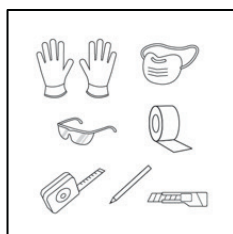
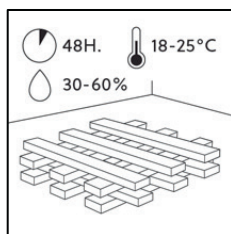
NB: BerryAlloc High Pressure Floors (HPF) products are not suitable for saunas, verandas or outdoor use.

For a fast installation and a perfect result that fulfils the warranty conditions, we advise to follow the below mentioned installation instructions carefully. Please also refer to local rules which may vary by country.

The text below describes both floating and glued installation of BerryAlloc Original, as some decors are available without pre-attached underlay. Comfort is the name of our collection with a pre-attached underlay, Core is the name of our collection without a pre-attached underlay.



1. Planning your installation



It is important to store the BerryAlloc HPF boxes at room temperature for at least 48 hours before the installation. Do not open the packs, and stack them in a way they have maximum contact with the air. The floor should be installed at a room temperature of 18-25°C and a relative humidity of 30-60%.

As this is a wood product, variations in temperature and humidity outside of these conditions will result in contraction or expansion beyond its standard tolerances.

We highly recommend keeping one end-label of the boxes together with the receipt, as this provides information on the production date and decor.

A floor is considered as an interior product, and should be treated accordingly, both during and after installation. The installation of the floor must be one of the last operations to be performed on the job site. Check that the ventilation in the building is running. Make sure to cover the floor if any other necessary work takes place after the installation.

Tools

When installing BerryAlloc Original, use the right tools to achieve the best result :

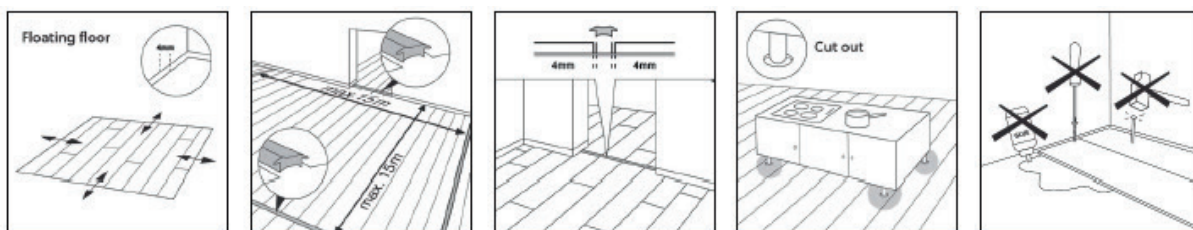
- Saw (circular saw, jigsaw, mitre saw or handsaw) with a laminate saw blade or a blade with fine teeth
- Square, sliding bevel
- Spacers incl. angle iron (BerryAlloc Startkit - WD180000)
- Tapping block Original (WD180003)
- Measuring tape
- Pencil

For your safety, use protective clothing: gloves, dust mask, protective glasses.

In case of a glued installation of the BerryAlloc Original Core, we recommend using BerryAlloc Wood Floor Glue (Ref. 63003597), in combination with the B3 spatula. Remember to use the same distance to fixed points as for a floating installation (4 mm).

If the responsibility of using another glue is taken, it needs to match the product specifications of the BerryAlloc Wood Floor Glue. Always follow the glue manufacturer's instructions and check the suitability of the adhesive in advance under real conditions for the intended application and purpose.

Apart from tools do not forget skirting and any expansion profiles (in doorways, transitions to other floors etc.).



If BerryAlloc HPF is installed as a floating floor, it must be able to move freely :

- Do not screw or glue the floorboards to the subfloor.
- Do not install fixed constructions such as kitchen cabinets or built-in closets on top of the floating floor. The weight of the object (when fastened to the wall) must rest only on the subfloor.
- Leave a 4 mm expansion gap to walls and other fixed constructions so that the flooring can move. Along walls ending in outer corners, we advise to keep 6 mm distance.

Always install T-profiles :

- In areas when the room length/width exceeds 15 m.
- In doorways and narrow transitions between rooms.
- When an underfloor heating system does not cover the entire floor area (separate heated/non-heated areas) install expansion profiles between these two areas.

BerryAlloc Original must be able to move around fixed constructions to avoid open joints/lock separation. This can be achieved by following one of two approaches :

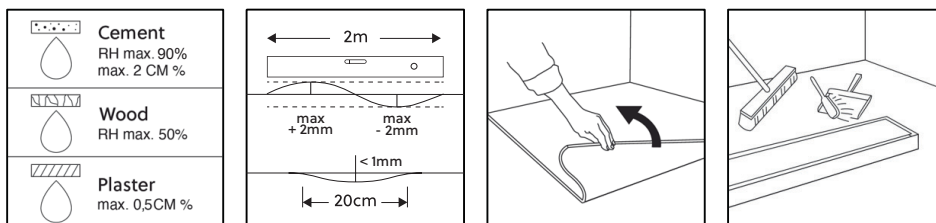
- Start by installing the fixed constructions (kitchen cabinets, fireplace, staircase etc.) followed by the installation of BerryAlloc Original around the objects.
- Start by installing BerryAlloc Original followed by the installation of the fixed constructions. Mark on the floor where the objects will be positioned and make holes for any furniture legs (alternatively, separate the area underneath by sawing an expansion joint which follows the perimeter of the object).

With a glued installation method, there are no length or width restrictions. Keep the same distance to the walls (4mm). T-profiles are not necessary and fixed constructions can be placed directly on the floorboards (including kitchen cabinets).

Whenever there is a functional, constructional joint in the subfloor, or if there is an underfloor heating joint in the screed, it is required to use a T-profile nonetheless.

2. Preparing the subfloor

BerryAlloc Original can be installed on most hard and non-tacky subfloors, e.g. chip-/plasterboards, compact PVC and linoleum (residual indentation < 0,1mm) or concrete/screed.



The subfloor must be completely dry when installing on :

- Wooden and wood-based material, max. 50% relative humidity
- Concrete and screed, max. 90% relative humidity or 2,0 CM % (max. 75% relative humidity or 1,8 CM % if floor heating)
- Plaster and plaster-based floor, max. 0,5 CM % (0,3 CM % if floor heating)
- In case of any specific national guidelines, these are to be followed.

The subfloor must be even (max. deviation 4 mm per 2 m and 1 mm max per 20 cm), dry and cleaned. In case of any specific national standard, this will be accepted. Sharp unevenness must be sanded down and any holes filled.

Secure the subfloor construction from squeaking or other noises. Soft material, like wall-to-wall carpets and cushion vinyl (CV), needs to be removed. Clean the subfloor before starting the installation. On an existing wooden floor, BerryAlloc HPF should be installed across the old floorboards.

A glued installation is recommended to be performed by a professional floor layer.

Make sure that the subfloor is even, dry, stable, clean, and free from any grease or chemical substances. If needed, scrape off and clean up/remove old adhesives.

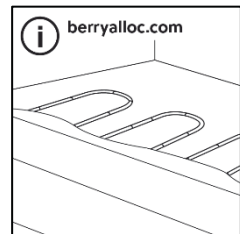
Otherwise, the subfloor requirements are the same for a glued installation as it is for the floating (considering that BerryAlloc HPF should not be glued on PVC or linoleum).

3. Underfloor heating / cooling

During installation, and the temperature of the subfloor must be between 18 and 20°C. After installation the temperature must be increased gradually, with the surface temperature not exceeding 27°C.

With electrical underfloor heating do not exceed 60 W/m².

For more detailed instructions on underfloor heating, including electric and waterborne systems, please read the underfloor heating manual on our website.

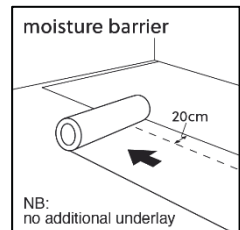


4. Underlays

If the BerryAlloc Original has a pre-attached underlay, no additional underlay is allowed, except for the moisture barrier.

For a floating installation, a vapor barrier (WD158235) must be used when installing on subfloors mentioned below :

- Concrete/screed
- Ceramic tiles
- Hard floor coverings such as compact PVC, cork and linoleum (if fully and firmly bonded)
- Any underfloor heating



Use a non-ageing PE-foil with the thickness of min. 0,20 mm which is applied with a joint overlap of min. 20 cm (and taped with vapor barrier tape if desired) and folded against the walls. The PE-foil may cause noises so make sure that it is stretched, and any creases folded out. Clean-cut the PE-foil when the floor installation is finished.

If the floor does not have a pre-attached underlay, select an underlay that complies with the following requirements :

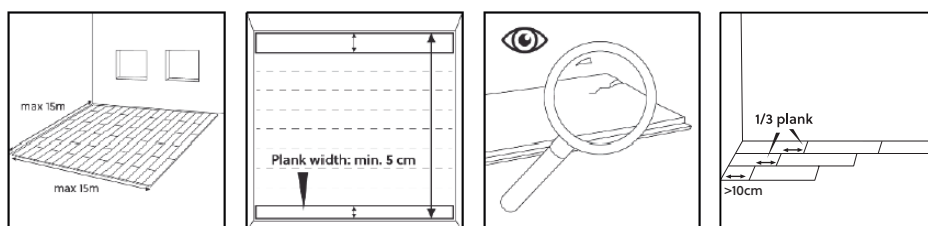
- The underlay needs to have a compressive strength (CS) of min. 60 kPa according to EN 16354:2018 (must not be compressed more than 0,5 mm)
- The thickness of the underlay needs to be between 1-3 mm

BerryAlloc Silent System (for the Nordic countries - 180002), Excellence Go 60 (63003600) and Excellence Plus (SEPLUS10) all comply with the above mentioned specifications. Further details on underlay differences can be found in our underlay guide.

NB: In case of problems caused by a non-compatible underlay, the warranty will not apply.

5. Getting started

We strongly recommend watching our installation video and to read/download the warranty conditions on our website.

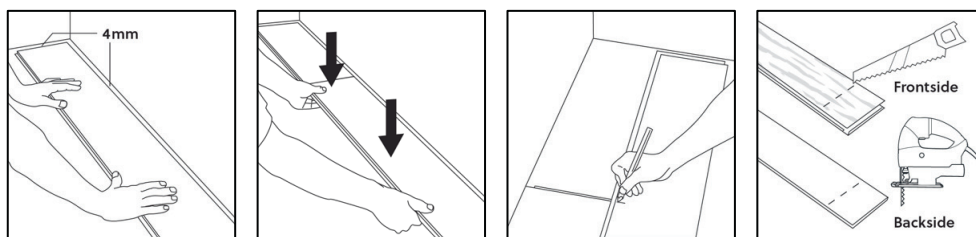


Direction of the floorboards: the floor will look at its best if installed parallel to the incoming light (short side facing the light).

Measure the length of the room from the point where the installation is planned to start to the wall where it will end. Divide this by the width of a plank. The purpose is to never end with a plank that is less than 5cm wide. If that is the case, modify the width of the first row (saw the plank so the installation doesn't start with a full width plank, but it should be more than 5cm).

Check all floorboards for visible defects in optimal light conditions, both before and during installation. Floorboards with defects must not be used. A defective floorboard that has been installed is considered accepted and will not be accepted as the cause of a claim after the installation is completed.

For the most natural pattern, make sure to mix the designs of the floorboards across the floor. The end joints should be staggered min. 1/3 of the length of the floorboard when installing the floorboards. The first and the last floorboard in each row should have a minimum length of 10 cm.



Start in the top left corner. Place the floorboard with the locking profiles facing the room and install towards the right. Ensure to have a tight short side connection between the floorboards. Continue in the same way with the next floorboards in the same row. Leave a gap of 4 mm between the short sides of the floorboards and the walls (use spacers, included in BerryAlloc Startkit – Ref. WD180000). The gap between the long side and the wall can be adjusted after 3 rows have been installed (see explanation further below).

Ending the row: Place the final floorboard faced down (locking profiles facing the room) with the short side positioned 4 mm from the wall. Mark the place where the floorboard is to be cut. Place the floorboard faced down (when using a jigsaw) on the work surface and cut to size. Start by cutting the locking profile. Make the cut as right-angled as possible. Turn the cut piece around and connect it to the short side of the previous floorboard. A handsaw (fine-tooth type) or mitre saw can also be used. Remember then to cut the floorboard faced up.

We advise to test install 3 rows before applying glue to the subfloor. In this way the floor can be aligned to the wall without having glue attached to the rear side. Afterwards, apply the glue to the subfloor, place the first floorboards as described above leaving a gap of 4mm to the wall.

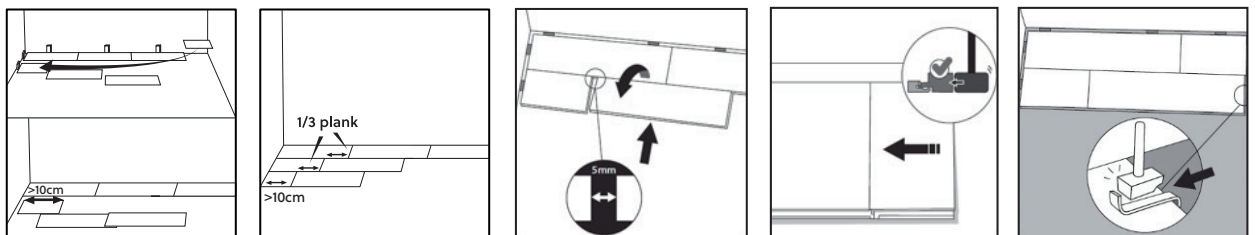
This method can also be used in tricky sections such as corners or under door frames.

As a recommendation, we suggest applying glue for 3 rows simultaneously, ensuring that the glue's open time does not elapse before the floorboards are positioned.

Try to limit movement on the BerryAlloc Original Core until the floor installation is completed, and the curing time for the glue has elapsed, as this will compromise the curing process. Always check opening and curing times for the glue chosen, as the above suggestions are general.

6. A quick and easy installation

The HighTec Loc system is extremely easy and fast, which allows installing floorboards with almost no effort.



Starting the 2nd row : place the floorboard in an angle of +/- 20° and press the long side into the aluminium strip of the floorboard in the previous row (1), while folding the floorboard down (2). When installing the next floorboard, ensure that the short side is positioned roughly 5 mm from the end of the previous floorboard (above its aluminium strip) and fold the floorboard down. Use the BerryAlloc Tapping Block (Ref. WD180003) to gently knock the floorboard into locked position on the short sides (see pictograms).

To install the last floorboard in each row (from the 2nd row) an angle iron is needed (incl. in BerryAlloc Startkit – Ref. WD180000).

Pro-tip

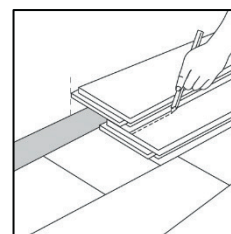
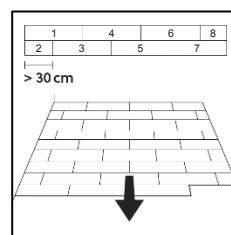
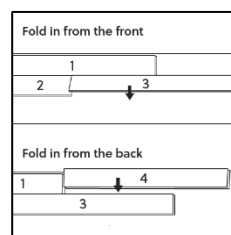
Getting the first row in a completely straight line can often be a bit tricky.

An easy way to overcome this problem is to install the first 2 rows of planks at the same time (cross installation), as shown in the 2 illustrations (also described also in the installation video on our website). The number on the planks indicates the installation order of the planks.

After installing 3 complete rows, slide the floor towards the wall, leaving a gap of 4 mm (use spacers). If the wall is uneven, the floorboards in the first row must be adapted to its contour. This is done by marking the wall shape on the floorboards and removing the first row. Cut the floorboards as required and re-install them by sliding them angled, into the already installed row.

If necessary, the floor can be installed rearwards/backwards. This installation method is done by locking the floorboards from behind, as described above.

The first and last row must be more than 5 cm wide. Measure the width of the last row. Leave a gap of 4 mm to the wall. Cut off (lengthwise) the unneeded part with the locking profile. Install the cut floorboard. This method should be repeated for each floorboard until the last row is complete. Use the angle iron when installing the last floorboard in the row.

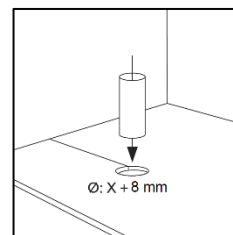


BerryAlloc Original installed following the floating method, can be used immediately after installation.

Whenever BerryAlloc Original Core is glued, it is important to check the curing time of the selected glue, to know when it is possible to use the floor normally.

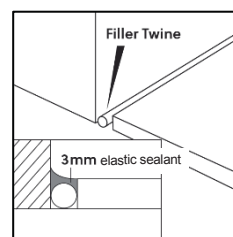
Pipes/columns

Drill holes in the floorboard, the diameter of the hole must be 8 mm larger than the diameter of the pipe. For fixed installations, like pipes, cut out the necessary piece in an angle of 45°. Glue the cut piece back into position and cover with pipe sleeves or flexible sealant (see next point).



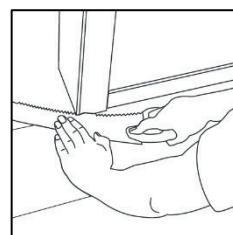
Termination towards a fixed construction with elastic sealant

Leave a gap of min. 4 mm and fill the gap with BerryAlloc Fillertwine (63000771). Cover afterwards with a thin layer of flexible sealant (>25% elasticity) in a matching colour. The use of an elastic sealant will reduce the movement of the floor and should only be used in limited places (see illustration). **NB:** Do not fill expansion gaps completely with sealant.



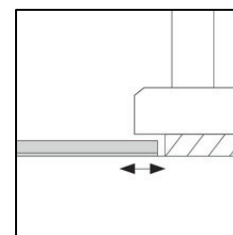
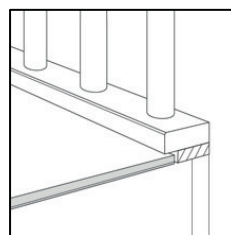
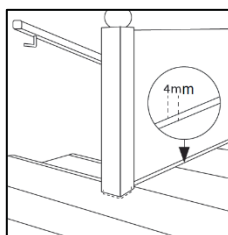
Door frames

We strongly recommend adjusting the door frames to allow installation of the floor underneath the frames (to allow free movement and achieve a good overlap with the floor). During the sawing, use a piece of floorboard as a support (turned upside down), when modifying the door frames to the correct height (see illustration). When the door frame cannot be cut, BerryAlloc Filler Twine and elastic sealant can be used to cover the gap.



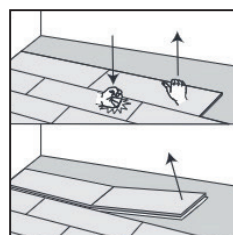
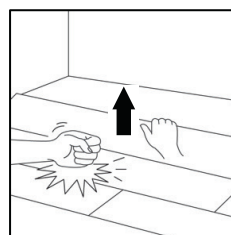
Stair railings, thresholds and other screwed/fixed objects

We recommend installing a wooden plank (slightly thicker than the floor) before fastening the stair railing/other screwed objects to the subfloor (see illustrations). Same applies to glued thresholds. This will allow free movement and achieve a good overlap with the floor.



Dismantling the floor (only floating installation)

Lift the row a few cm and tap with your fist along the long side joint of the floorboards. The row is released and can gently be pulled out. To release the floorboards on the short end, bend the floorboard carefully upwards to avoid damages on the locking system.



7. A perfect finish

BerryAlloc offers a wide range of accessories with a timeless design for the finishing touch:

- Matching skirtings 60mm and skirting clips
- Matching T-profile and stair nose
- Aluminium reducer, end and T-profile
- Aluminium stair nose

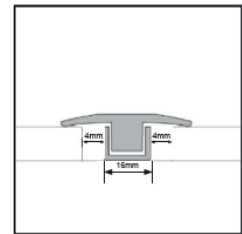
Paintable white skirting is also available and can be used unpainted, or they can be painted in the same colour as the wall.

When installing accessories, always keep in mind that the floor must be able to move. This means:

- After having installed a skirting or profile, do not seal/fix it to the floorboards with sealant. The movement of the floor will cause cracks in the sealant which makes it ineffective and unesthetic.
- Joints on fixed building elements (door frames, heating pipes, etc.) should never be sealed with sealant.
- Use a BerryAlloc Filler Twine first and then finish with a flexible sealant that allows the floor to move.
- Profiles, doorstops, and similar should not be screwed through the floorboards into the subfloor.

T-profile (incl. U-profile)

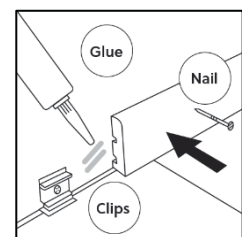
Fix the U-profile to the subfloor and leave a gap of 4 mm to the floor areas. Click the T-profile in place after having installed the complete floor. The floor areas should be able to move freely. When using the aluminium T-profile, the BerryAlloc Silent System underlay needs to be removed along the edge of the floorboard to make room for the U-profile.



Skirtings

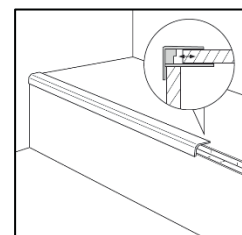
Use BerryAlloc Clips when installing our matching skirting, to be able to remove it easily. The clips should be placed with 50 cm intervals.

Tip for cutting in corners: Support the skirting with 2 clips on the backside when cutting, to make the correct angle on the skirting. The skirting can also be glued or nailed (with a nail gun). Be careful not to glue or seal the skirting to the floor.



Aluminium Stair nose

When installing an aluminium stair nose on the top step of the stairs make sure to have free movement of the floor underneath the overlapping stair nose. For more detailed instructions on stair nose installation, please read the stair nose installation manual on our website. sure to have free movement of the floor underneath the overlapping stair nose.



Additional instructions for the installation in wet room

After installing a BerryAlloc HPF floor, it is important to seal the perimeter of the floor with a water-repellent sealant.

Step 1: Put BerryAlloc Filler Twine in the expansion gap. Filler Twine allows the floorboards to expand or contract. Also use Filler Twine in the expansion gap under floor profiles such as T-profiles, reducers etc.

Step 2: Cover Filler Twine with elastic sealant. The sealant should touch both the wall and the floorboards and be applied in a way that it completely closes the gap.

With floor profiles, use sealant on top of the Filler Twine before installing the profile, to avoid water contact with the edges and the core board of the floorboards.

Installation sealing kit

We offer the sealing accessories as a set, that is suitable to seal 10 meters. The accessories are also separately available.

8. Care and maintenance

After installation it is required to maintain a room temperature of 18-25°C and a relative humidity level between 30-60% (optimum level 40-50%). During wintertime, the air in the rooms is usually extremely dry, and for this reason it is strongly recommended to use humidifiers to maintain a constant humidity level. In the summer and autumn, when there is a high relative humidity the room should be well ventilated. Too low/high relative humidity may cause irreversible damage to the floor, such as opened joints, warping and squeaking sound.

BerryAlloc HPF is amazingly easy to clean:

- **DRY CLEANING:** with a brush, mop with dry wipes or vacuum cleaner
- **WET CLEANING:** with a well wrung-out cloth

Clean up any spilled liquids immediately. We strongly recommend using the BerryAlloc Cleaner Ultra (63002725), it has been specially developed to clean our BerryAlloc HPF and leaves no traces.

Domestic steam cleaners can be used on BerryAlloc HPF in combination with a suitable cloth to prevent direct contact between steam and floorboards. Select a low power setting and avoid staying in one place for too long.

Put doormats at every entrance to protect the BerryAlloc HPF from dirt and sand. Always lift heavy furniture while moving them and put felt pads on the legs of chairs. We recommend using clear chair mats under office chairs on shipdeck surfaces. BerryAlloc HPF cannot be polished or treated with products that contain wax or oil.

For more details, read our care and maintenance manual.

9. Warranty

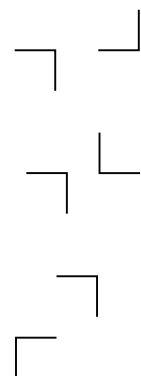
By following the above-mentioned instructions, the longevity of the BerryAlloc HPF will be extended and the validity of the warranty ensured.

We refer to our warranty conditions for more info.

Legal information

This document presents the general installation instructions, based on the latest available information. For the best result, and to ensure the validity of the guarantee, these instructions should be followed carefully. This document replaces all previous versions and is valid until further notice. This information is a representation of the technical knowledge at the time that this document was produced/published and may be amended, complemented, or replaced at any time. Please check the following website frequently for updates: www.berryalloc.com

10. Installation videos



high pressure floors.